

PACS Migration tool

User Guide

Copyright © 2022 [Santesoft LTD](#), all rights reserved

Table of Contents

Overview	2
Features of the program:.....	3
Program options.....	5
The user interface.....	6

Overview



PACS Migration is a tool that lets the user to migrate the data (information of patients and their images) of an old PACS system to **Sante PACS Server**. PACS Migration is an external program and works independently from Sante PACS Server without burden it with unnecessary load. The program sorts the studies to be inserted with their study date and inserts first the newer studies. This way the latest studies are available in the server immediately.

The program lets the user to insert files that have been received recently or in a specific date range from the old PACS system and they are not inserted to Sante PACS Server.

It can be used not only for migration tasks, but it is useful as well to insert into database any folder with DICOM files any time, e.g. from a USB memory stick or from an external hard disk drive.

To run the **PACS Migration** tool, select the menu command “**Utilities** → **Migration Tool**”.

PACS Migration

Image folder of the old PACS system (or any folder with DICOM images):
D:\DICOM Images\ Browse...

Image folder of Sante PACS Server:
C:\Sante Server DB\

Options

Copy the DICOM files to image folder of Sante PACS Server
 Import only links of the DICOM files to database of Sante PACS Server
 Use dates

Date from: 11/17/2021 Date to: 11/17/2021

Start New Job Restart Previous Job Pause Job Cancel Job

Current Procedure

Minimize To tray View Report... User Guide... Close

Features of the program:

- **It works independently from Sante PACS Server**

If Sante PACS Server closes for any reason, the PACS Migration tool will continue to work.

- **It can stop and continue from the last folder**

The user can pause the job and continue it from the last folder added in the database of Sante PACS Server.

- **It can resume from the last folder**

- If the PACS Migration tool closes abnormally for any reason, (e.g. from electric power failure), the user can continue the task from the last folder added in the database of Sante PACS Server without starting again from the beginning.

- **It works from the newer studies to older**

The program sorts the studies to be inserted with their study date and inserts first the newer studies. This way the latest studies are available in the server immediately.

- **It can add studies of specific date range**

- If the old PACS system is still used during the migration procedure, the last studies received from the old PACS system will not be inserted to Sante PACS Server, because the list of the studies to be inserted is created in the beginning of the procedure and thus it has already created when the new studies are arrived into old PACS system. In a situation like that the user can run again the program with the usage of the date range feature and create a migration job for the latest studies only.

- **It can be used to insert any folder into database**

PACS Migration tool can be used not only for migration tasks, but it is useful as well to insert into database any folder with DICOM files any time, e.g. from a USB memory stick or from an external hard disk drive.

- **Detailed report**

The program displays a detailed report about the migration job status.

Migration Report ✕

Succeeded Folders

#	Folder
1	D:\DICOM Images\wv_demo99\
2	D:\DICOM Images\wustl_philips\
3	D:\DICOM Images\wmv files\
4	D:\DICOM Images\ucdavis_ge\
5	D:\DICOM Images\printscp_testcases\printjobs\
6	D:\DICOM Images\photoID\monochrome-video\
7	D:\DICOM Images\photoID\color-video\
8	D:\DICOM Images\old ctnrest\
9	D:\DICOM Images\offis\

Failed Folders

#	Folder	Reason
1	D:\DICOM Images\Varian\	The files do not contain Study Instance UID
2	D:\DICOM Images\User Images\Testordner\	The files do not contain Study Instance UID
3	D:\DICOM Images\Philips\CDM-3300-1.1.2\dicom\stdy_001\	The files do not contain Study Instance UID
4	D:\DICOM Images\Philips\CDM-3300-1.1.2\dicom\	The files do not contain Study Instance UID
5	D:\DICOM Images\Lead\	The files do not contain Study Instance UID
6	D:\DICOM Images\Larisa\	The files do not contain Study Instance UID

Program options

The user can select as folder of database and images of Sante PACS Server the same folder of the old PACS system or a new, different folder. In the case of the different folder the user has two options:

- to copy the files from the folder of the old PACS system to folder of Sante PACS Server. In that case, after the migration, the user can create a backup and delete the old folder. **The backup is highly recommended.** This option is recommended when the user has changed the hard disk drive of the system with a larger one and intends to remove the old hard disk drive.
- to keep the files in the old folder. In that case the old folder must remain on the system and the files must not be deleted. Sante PACS Server will create database entries and links for these files.

Options

- Copy the DICOM files to image folder of Sante PACS Server
- Import only links of the DICOM files to database of Sante PACS Server

When the source and destination folders are the same (the folder of the old PACS system and the folder of Sante PACS Server accordingly), the option **“Copy the DICOM files to image folder of Sante PACS Server”** is not available because the files are already in the right folder and Sante PACS Server has only to create the database entries and the links of these files.


Options

- Copy the DICOM files to image folder of Sante PACS Server
- Import only links of the DICOM files to database of Sante PACS Server

Use dates

This option is useful to insert the recently received files when the old PACS system has received files that are not inserted to Sante PACS Server. If the old PACS system is still used during the migration procedure, the last studies received from the old PACS system will not be inserted to Sante PACS Server, because the list of the studies to be inserted is created in the beginning of the procedure and thus it has already created when the new studies are arrived into old PACS system. In a situation like that the user can run again the program with the usage of the date range feature and create a migration job for the latest studies only.

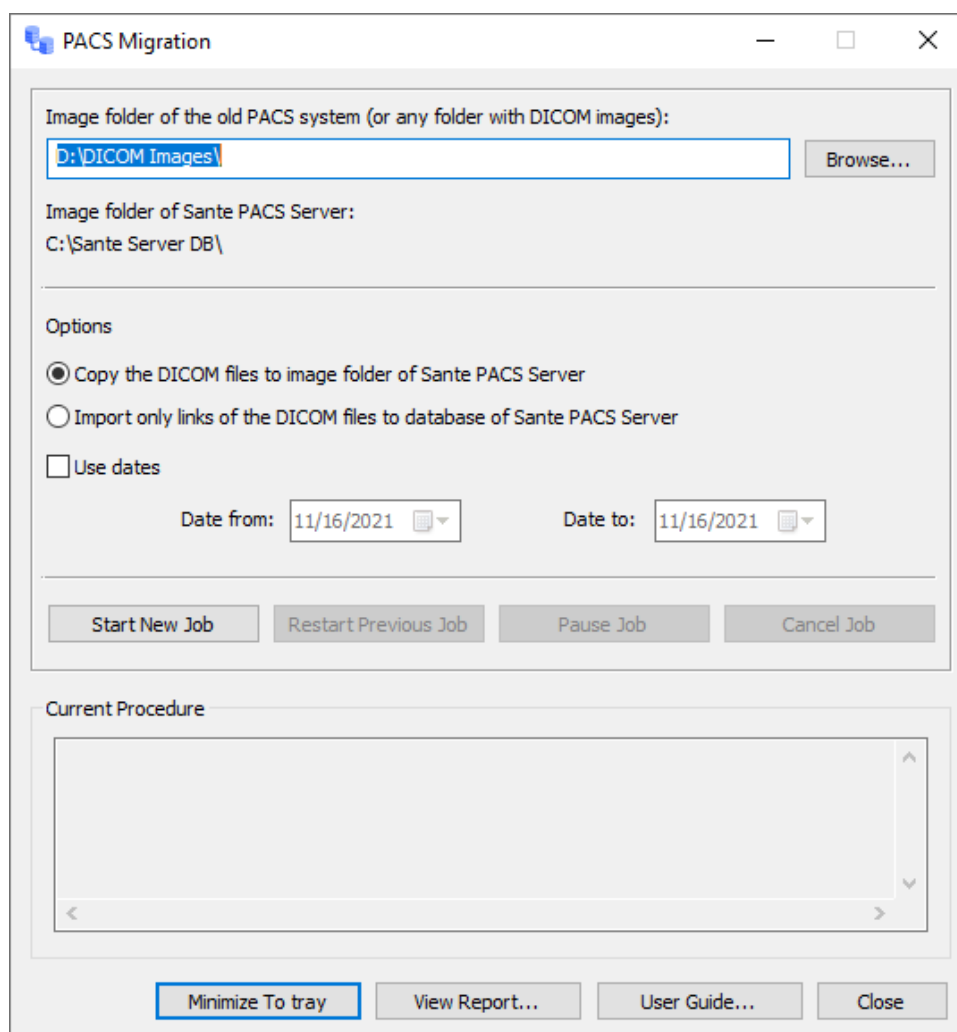
Use dates

Date from: 11/17/2021 

Date to: 11/17/2021 

The user interface

To run the **PACS Migration** tool, select the menu command **“Utilities → Migration Tool”**.



“Browse...” button

Lets the user to select the source folder of the files (the folder of the old PACS system or any other folder the user wish to add into database of Sante PACS Server).

“Image folder of Sante PACS Server”

Displays the folder of the database and images of Sante PACS Server. To change this folder, close the program, select the menu command **“Database → Database Setup”**, select the desired folder and run the PACS Migration tool again.

“Options”

- **Copy the DICOM files to image folder of Sante PACS Server**
Use this option to copy the files from the folder of the old PACS system to folder of Sante PACS Server.
- **Import only links of the DICOM files to database of Sante PACS Server**
Use this option to keep the files in the old folder and to create database entries and links for these files.
- **Use dates**
This option is useful to insert the recently received files, when the old PACS system has received files that are not inserted to Sante PACS Server.

“Start New Job” button

Starts a new migration job.

“Restart Previous Job” button

Restarts the previous interrupted migration job.

“Pause Job” button

Pauses the current migration job. The job can be restarted with the button **“Restart Previous Job”**.

“Cancel Job” button

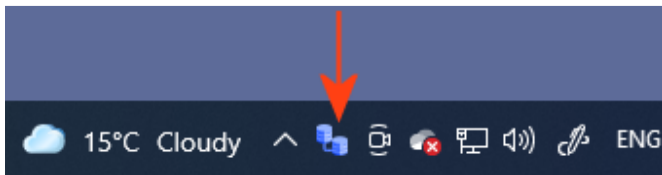
Cancels the current migration job.

“Current Procedure”

Displays the status of the current migration job.

“Minimize To tray” button

Minimizes the interface of the program to icon tray.

**“View Report...”** button

Displays a report about the progress status of the current migration job.

“User Guide...” button

Displays this document.

“Close” button

Stops the running procedure (if any) and closes the program.